

# THE HARRISBURG DAILY DOSE

PRESENTED BY  
**Equithrive.**

THURSDAY - OCTOBER 12, 2017



## Welcome Back



### PNHS Junior Weekend! Good Luck to all of our competitors!

*Pennsylvania National*  
**HORSE SHOW**

#### DID YOU KNOW?!

- The first PNHS was held at the PA Farm Show Complex in 1946.
- PNHS holds EIGHT national championships over 10 days of competition.
- Nearly 1400 horses and riders from EIGHT different countries will compete this week.
- The 2017 show has FIVE Olympians and FOUR World Cup Champions.
- Our equine athletes will be rewarded with more than 1800 lbs of apples and nearly TWO TONS of carrots when they walk out of the ingate after competing.
- We will reward our human athletes with 1,321 coveted PNHS ribbons this year.
- Over \$500,000 in Prize Money is distributed throughout the 2017 PNHS.
- PNHS Staff is more than 75 strong... including ring crew, office staff, paddock masters, managers, stabling, footing, judges and more!
- There are more than 75 unique boutique vendors stalls for you to shop.
- The PNHS has given more than TWO MILLION DOLLARS to charities over the years!!



### Ribbon Cutting



*Pennsylvania National*  
**HORSE SHOW**  
FOUNDATION  
**2017**  
silent  
**AUCTION**

Exhibitors and spectators are invited to stroll the concourse and to view Silent Auction items at participating vendors as well as at the PNHS Merchandise Booth on the upper concourse at the horse show.

Silent Auction items may also be viewed on the website at [www.PANational.org](http://www.PANational.org). All bidding is on-site during the ten-day horse show. Items will be available to the highest bidder immediately following the marquis event, the \$100,000 Prix de Penn National Grand Prix, Saturday evening, October 21

#### Tentative Time Schedule

7:30a	22 Sm. Jr. Hunter 15 & U
8:30a	23 Sm. Jr. Hunter 15 & U Handy
9:35a	27 Sm. Jr. Hunter 16-17
10:35a	28 Sm. Jr. Hunter 16-17 Handy
11:40a	32 Lg. Jr. Hunter 15 & U
12:40p	33 Lg. Jr. Hunter 15 & U Handy
1:45p	37 Lg. Jr. Hunter 16-17
2:45p	38 Lg. Jr. Hunter 16-17 Handy
3:50p	47 Sm. Jr. Hunter 3'3"
4:25p	52 Lg. Jr. Hunter 3'3"
5:00p	48 Sm. Jr. Hunter 3'3" Handy
5:40p	53 Lg. Jr. Hunter 3'3" Handy
6:20p	21 Sm. Jr. Hunter 15 & U U/S
6:35p	26 Sm. Jr. Hunter 16-17 U/S
6:50p	31 Lg. Jr. Hunter 15 & U U/S
7:05p	36 Lg. Jr. Hunter 16-17 U/S
7:20p	46 Sm. Jr. Hunter 3'3" U/S
7:30p	51 Lg. Jr. Hunter 3'3" U/S

7:45p Set for Jumpers

8:15p Neue Schule / USEF  
Junior Jumper Individual Phase 1

#### JUNIOR JUMPERS

Meeting & Draw

11:00 am

North Lobby

off concourse near sections 9 & 10

Horse Inspection

1:00 pm

Equine Arena



Live Scoring  
Orders of Go  
and Results!

Scan the QR code  
for a direct link!



Tell your friends!

The 2017 Pennsylvania National Horse Show will be

LIVE broadcast every day on  
**www.eqsports.net**

Check our website for more information.

[www.panational.org](http://www.panational.org)

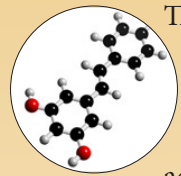


## Sponsor Spotlight

# Equithrive

A COMPANY BUILT ON SCIENCE

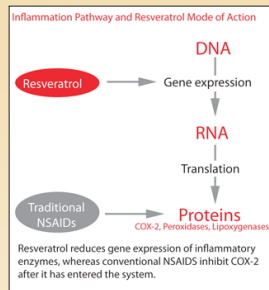
In 2007, Dr. Patrick Lawless was working as a biopharmaceutical research scientist developing new anti-inflammatory drugs when he witnessed Kentucky Derby winner Barbaro's tragic breakdown in the Preakness Stakes. With the entire nation, he followed the courageous battle waged by this horse and his caretakers until he finally succumbed to the tragedy of laminitis.



Through his own research, Dr. Lawless had become familiar with the natural anti-inflammatory compound Resveratrol. Resveratrol was receiving a great deal of recognition at that time due to it being the first compound identified to activate the "anti-aging gene" SIRT1. Pat realized

that there was an opportunity to use Resveratrol to help horses suffering from chronic inflammatory conditions, such as arthritis, Equine Metabolic Syndrome (EMS) and laminitis.

In 2008, Dr. Lawless founded the company Equithrive and introduced the first equine product (Equithrive® Joint) to contain a purified form of Resveratrol. Since then, the efficacy of Equithrive Joint in reducing lameness, inflammation and oxidative stress in animals has been proven in multiple university studies. The company has also launched a higher dose Resveratrol product (Metabarol™) that was the first equine product demonstrated to lower insulin levels in horses with EMS.



For more information please visit the website [www.equithrive.com](http://www.equithrive.com)



LINDSAY MAXWELL  
CHARITABLE FUND

The Lindsay Maxwell Charitable Fund, a private charitable fund, was founded by Lindsay Maxwell to assist organizations that promote causes meaningful to her.

The Fund accepts grant proposals exclusively from tax-exempt, charitable organizations for the benefit of charitable, educational, or scientific purposes.

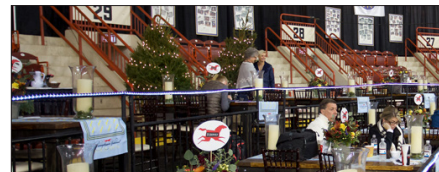
The issues where the Fund focuses its resources reflect Lindsay's personal priorities and values: improving the lives of children with special needs; enabling access opportunities to education; and providing care, compassion, and protection to animals.

## EMO Agency Terrace Tables

The EMO Agency returns as the Title Sponsor of the EMO Agency Terrace Tables. Located off gate 27 of the Upper Concourse, the Terrace Tables offer ringside seating at tables of six. Breakfast, lunch and afternoon snacks are served daily and there is an on-site bar.



Tables are sold in time increments to coincide with the schedule: Junior Weekend tables are available from Thursday October 12 through Saturday October 14; Medal Sunday is sold separately; Senior Week tables are available Monday October 16 through Friday, October 20; and Saturday, October 21 is sold separately for Grand Prix coverage. Only in its second year, the EMO Agency Terrace Tables sold out quickly for most time slots.



"The Terrace Tables are the perfect fit for the EMO Agency. We have been a sponsor of the Horse Show now for several years promoting the Highest scoring

hunter rounds in the Juniors, Ponies, Professionals and Amateurs with a fifth award going to the highest scoring round of the horse show. The EMO High Five Awards have grown into a coveted goal across the divisions. Adding the Terrace Tables to our sponsorship just seems like a natural extension to provide great viewing and hospitality to watch these high scoring rounds", said E. Sue Bopp of the EMO Agency.

Please contact **Patty Wise** at (703)713-2906 for any remaining table availability.

Order  
**Equithrive®**  
SAVE 20%

Receive 20% off 2-lb. and 8-lb. containers of Equithrive® Joint and Equithrive® Molasses when you order online with coupon code **PNHS17** on initial orders placed by October 31, 2017.

Free shipping included.

What are you waiting for?  
Place your order today!

[www.equithrive.com](http://www.equithrive.com)

A Special  
**Pennsylvania National  
Horse Show Offer**



Susquehanna  
**HARVEST**  
SEASONAL GRILL & WINE BAR

THE SHOPS AT SUSQUEHANNA MARKETPLACE  
2625 BRINDLE DRIVE HARRISBURG, PA  
717.545.4028 // HARVESTSEASONALGRILL.COM

enjoy a  
**COMPLIMENTARY  
FLATBREAD**

OCTOBER 12<sup>TH</sup> - 21<sup>ST</sup>

VALID AT HARRISBURG LOCATION ONLY. LIMIT ONE PER TABLE. CANNOT BE COMBINED WITH OTHER OFFERS. VALID UNTIL 10/22/17



PNHS Official Restaurant Partner - The perfect place for a delicious post show dinner!